

Vermeer Inaugurates new workshop facility in Chennai, India

Vermeer Equipment India Private limited (VEIPL) is the wholly owned subsidiary of Vermeer Corporation and Vermeer Asia Pacific Pte. Ltd. VEIPL is established in India and would be responsible for the business in the South Asia region for all products manufactured by Vermeer. We provide the sales, service and technical support to all our customers across the region.



As an industrial and agricultural equipment company, Vermeer Corporation manufactures machines that make a real impact in a progressing world. Vermeer offers customers a full line of high-quality underground construction, surface mining, tree care, environmental and agricultural equipment. Vermeer machines carry a reputation for being built tough, built to perform and built for value. Headquartered in Pella, Iowa, U.S.A., with affiliated companies and independent dealer locations around the world, Vermeer is committed to meeting customers' needs in more than 60 nations. Those customers are at the core of the business and supported by reliable, localized customer service and support provided by independent dealers. That support has been part of the culture at Vermeer for more than six decades.

[Visit Us](#)

Based in Singapore, Vermeer Asia Pacific supports our dealerships in Australia, Bangladesh, Brunei, Cambodia, China, India, Indonesia, Japan, Korea, Laos, Malaysia, Mongolia, Myanmar, Nepal, New Zealand, Pacific Islands, Pakistan, Philippines, Singapore, Sri Lanka, Taiwan, Thailand and Vietnam.

VEIPL is located in Chennai, Tamil Nadu State with a facility of Parts warehouse and service workshop. Customer support being the prime focus, we have appointed and trained service support engineers, who are based in few strategic locations to provide quick and quality support to our customers. For the customers to have quick and easy access to reach Vermeer team, we have introduced Toll free number [1800 120 5931](tel:18001205931).

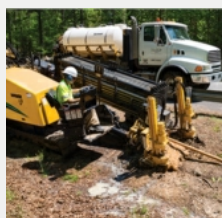
The facility was Inaugurated by Mr. Jason Andringa, President & CEO Vermeer Corporation. At Vermeer, we strive to live out a 4P philosophy. Every decision made is driven by the four values that reflect the Vermeer character and foundation - principles, people, product and profit. We believe in "Treat others the way you want to be treated"



[Click here](#)

"India is one of the main market for Vermeer Corporation and indispensable and strategic for us in the long run, Vermeer drills have a good market share in India just because of our commitment for quality "build to last".

[Click here](#)



• Our Regional Heads:

Mr. Praveen Kumar OS: (Regional Head - South)
Mobile: +91-9901064007 Email ID: ospkumar@Vermeer.com

Mr. Aditya Gund: (Regional Head - West)
Mobile: +91-7767899331 Email ID: agund@Vermeer.com

Mr. Tarique Salman: (Regional Head - North & East)
Mobile: +91-9560048778 Email ID: tsalman@Vermeer.com

[Click here](#)

BC1200XL



When there's tough brush-clearing work to do, you can count on the Vermeer BC1200XL to handle it. The electronic fuel injection engine provides improved fuel economy with 135 horsepower (101 kW). The PSI engine allows for more efficient working conditions and boosts engine response under load.

[More info...](#)

TG5000 Tub Grinder



The TG5000 tub grinder is the perfect combination of innovation and power, featuring state-of-the-art technology and powered by a one of two turbocharged CAT Tier 3 engine options. See here how this great machine can help make your job a little easier!

[More info...](#)

[Check our product range!](#)



D44x55 S3

D40X55 S3 comes with 177.9 kN of thrust/pullback and 7457 Nm of rotational torque which helps operator to done the job faster. For More Details call us on Toll Free: [18001205931](tel:18001205931)

[Read More](#)

C430

With imported hydraulic pumps and enhanced cooling system, the C430 horizontal directional drill offers a high level of performance in a wide range of conditions with a rotational torque of 9,150 Nm and 43 ton of pullback force. This exceptional torque and pullback force is combined with a 460 L/min onboard variable flow mud pump for maximized efficiency. The small footprint allows for increased drill maneuverability in difficult jobsite conditions.**image**



[Read More](#)



Vermeer Equipment India Pvt Ltd - Suite No. 613, 6th Floor, Acropolis Building, No 148, Dr. Radha Krishnan Road,
Mylapore, CIT Colony, Mylapore, Chennai, Tamil Nadu 600004
www.vermeer-india.com - vermeerindia@Vermeer.com

We sent out this message to all existing Company Name customers.
If you want more information about our product, please visit [this page](#).

If you no longer wish to receive these emails, simply click on the following link [Unsubscribe](#).

©2019 Vermeer Equipment India Pvt Ltd. All rights reserved.