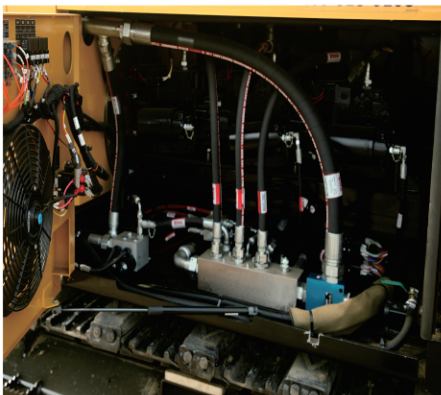


C500

Horizontal Directional Drill



Utilizes a Sauer Danfoss closed loop, variable displacement, piston style hydraulic pump in order to maximize efficiency and reliability.



The CAN bus electrical system offers reliable and easy diagnostics.



Installed with industry leading safety features such as the remote lockout system and electric strike alert system.



The operator station utilizes ergonomic design, using integrated joystick with fingertip buttons, switches and controls.



The quality Poclair drive motors maximize the efficiency of the system, saving energy and fuel, improving reliability and product life.



The rack and pinion thrust design offers a reliable and low maintenance power delivery system to help to improve productivity.

Specifications

Dimensions	
Total Length:	9m
Total Width:	2.3m
Total Height:	2.9m
Total Weight (Base machine with Rod Stager):	15ton
Total Weight (Base machine with Rod Loader & 9 Rods):	18ton

Performance	
Maximum Pullback:	50t
Maximum Thrust:	50t
High Thrust/ Pullback Speed:	30m/min
Low Thrust/ Pullback Speed:	15m/min
Maximum Spindle Torque:	14,000n.m
Medium Spindle Torque:	10,650n.m
Low Spindle Torque:	7,300n.m
High Rotation Speed:	162rpm
Medium Rotation Speed:	109rpm
Low Rotation Speed:	82rpm
Maximum Ground Drive Speed:	2.8km/h

Engine	
Brand:	CUMMINS
Power:	179kw
Rated RPM:	2,200rpm

Drill Pipe	
Type:	API Nc31
Rod Diameter:	89mm
Rod Length:	4.5m
Weight:	100kg
Entry Angle:	9°~18°

Features	
Breakout System (Vise):	Standard
Stakedown:	Optional
Drilling Lights:	Standard
Mud Flow Indicator:	N/A
Cab W/ Heat and A/C:	Standard
Gearbox Thrust Method:	Rack and Pinnion
Roal Loader:	Optional

Mud Pump (Chinese)	
Maximum Pressure:	80bar
Maximum Flow:	650L/min

Tank Capacity	
Hydraulic Tank:	410L
Fuel Tank:	320L

#11 Guwang Road, Jingbin Industrial Park, Wuqing District, Tianjin 301712 China.

Tel : +86 22 5857 8577 Fax: +86 22 5857 8599

vcsinfo@vermeer.com

